

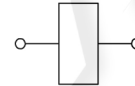
Part number:

CT-9200

COIL - TUBE Ø 13 **22 W**

- Wire insulation class. **H (>185°C)**
- ED. **100%**
- Coil power at 20° C. **22 W**
- Ambient temperature **-20 +40° C**
- Weight. **0,19 Kg**

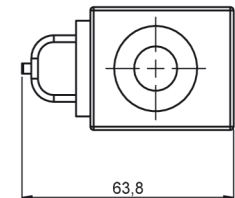
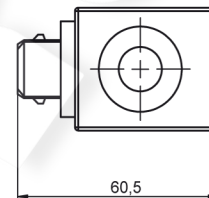
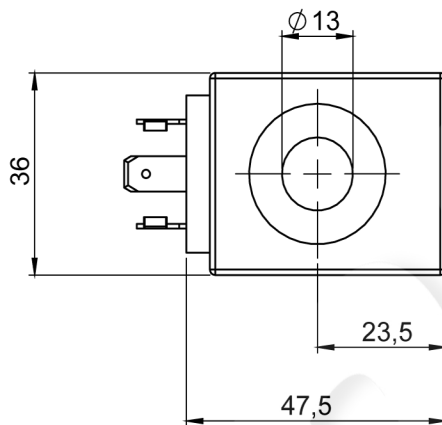
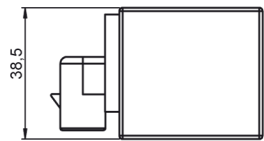
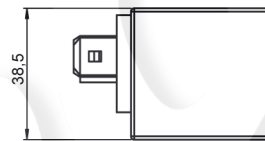
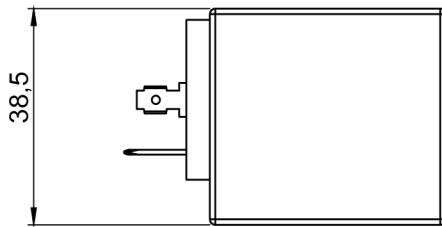
ELECTRIC CIRCUITS



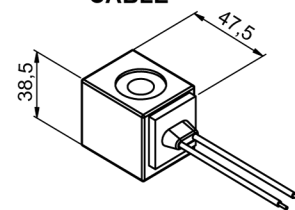
STANDARD

AMP - JUNIOR

AMP - SUPER SEAL



CABLE



Note:

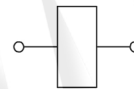
- Coil interchangeable with CT-9400 model.

CONNECTOR	PROTECTION CLASS	COIL THERMAL INSULATION CLASS	VOLTAGE [V]	RESISTANCE [Ω]	CIRCUIT	ORDERING CODE
DIN 43650	IP65*	F	12 V dc	6,5	STANDARD	092001130
DIN 43650	IP65*	F	14 V dc	8,9	STANDARD	092001132
DIN 43650	IP65*	F	24 V dc	26,5	STANDARD	092002130
DIN 43650	IP65*	F	26 V dc	30,6	STANDARD	092002132
AMP-JUNIOR	IP65*	F	12 V dc	6,5	STANDARD	092201130
AMP-JUNIOR	IP65*	F	24 V dc	26,5	STANDARD	092202130
AMP-JUNIOR	IP65*	F	26 V dc	30,6	STANDARD	092202131
CABLE L=300mm	IP65*	F	14 V dc	8,9	STANDARD	092601130
CABLE L=300mm	IP65*	F	26 V dc	30,6	STANDARD	092602130
AMP-SUPER SEAL	IP67*	F	24 V dc	26,5	STANDARD	092702130

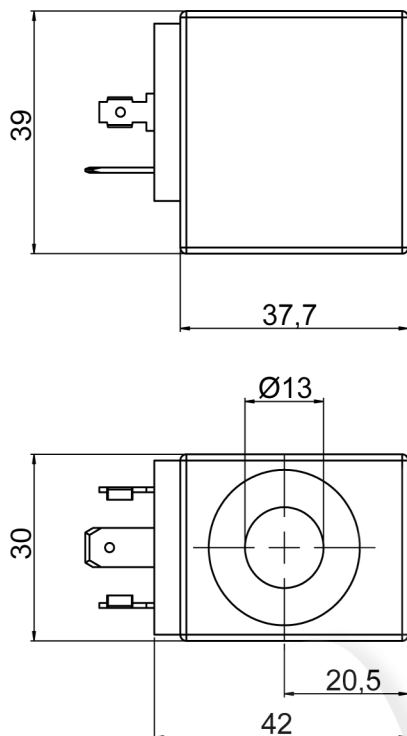
* Protection index with standard connector

- Wire insulation class. **H (>185°C)**
- ED. **100%**
- Coil power at 20° C. **18 W**
- Ambient temperature **-20 +40° C**
- Weight. **0,15 Kg**

ELECTRIC CIRCUITS



STANDARD



CONNECTOR	PROTECTION CLASS	COIL THERMAL INSULATION CLASS	VOLTAGE [V]	RESISTANCE [Ω]	CIRCUIT	ORDERING CODE
DIN 43650	IP65*	F	12 V dc	7,5	STANDARD	093001131
DIN 43650	IP65*	F	24 V dc	30,1	STANDARD	093002131
DIN 43650	IP65*	F	24 V rac**	25,6	STANDARD	093007130
KOSTAL M27x1	IP65*	F	12 V dc	7,5	STANDARD	093401131
KOSTAL M27x1	IP65*	F	24 V dc	30,1	STANDARD	093402131

* Protection index with standard connector

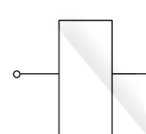
** Rectifier not included

COIL - TUBE Ø 13

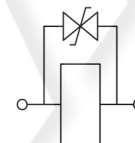
20,5 W

- Wire insulation class. **H (>185°C)**
- ED. **100%**
- Coil power at 20° C. **20,5 W**
- Ambient temperature **-20 +40° C**
- Weight. **0,16 Kg**

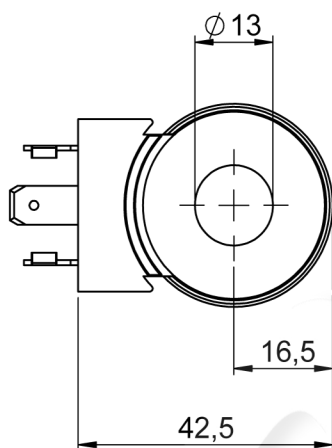
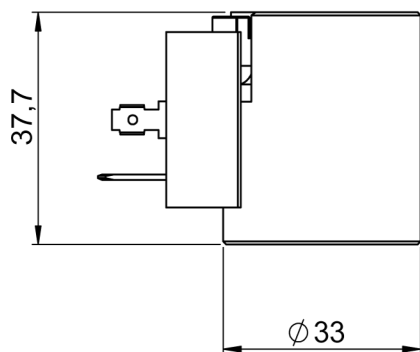
ELECTRIC CIRCUITS



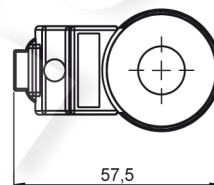
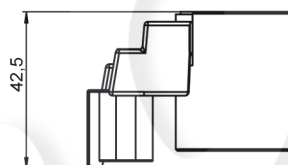
STANDARD



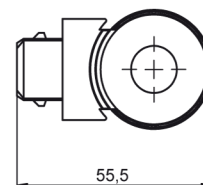
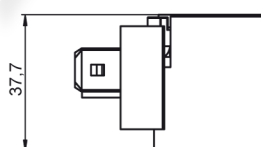
**WITH DIODE
(BI-DIRECTIONAL)**



AMP - JUNIOR



DEUTSCH DT4



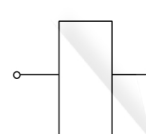
Note:
- Coil interchangeable with CT-9200 model.

CONNECTOR	PROTECTION CLASS	COIL THERMAL INSULATION CLASS	VOLTAGE [V]	RESISTANCE [Ω]	CIRCUIT	ORDERING CODE
DIN 43650	IP65*	F	12 V dc	7	STANDARD	094001000
DIN 43650	IP65*	F	24 V dc	28	STANDARD	094002000
DEUTSCH DT 4	IP67	F	12 V dc	7	WITH DIODE	094101000
DEUTSCH DT 4	IP67	F	24 V dc	28	WITH DIODE	094102000
AMP - JUNIOR	IP65*	F	12 V dc	7	STANDARD	094201000
AMP - JUNIOR	IP65*	F	24 V dc	28	STANDARD	094202000

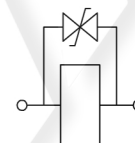
* Protection index with standard connector

- Wire insulation class. **H (>185°C)**
- ED. **100%**
- Coil power at 20° C. **36 W**
- Max current at 24 V dc. **0,9 A**
- Max current at 12 V dc **1,8 A**
- Ambient temperature **-20 +40° C**
- Weight. **0,28 Kg**

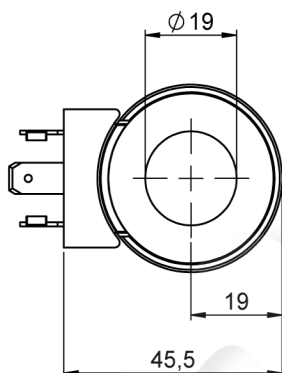
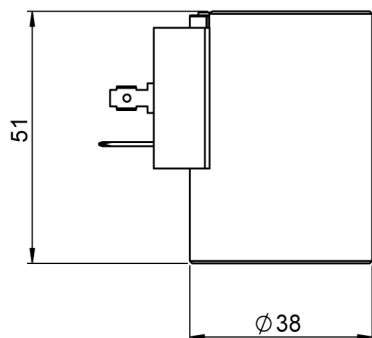
ELECTRIC CIRCUITS



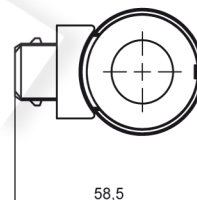
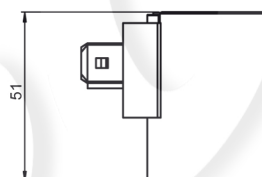
STANDARD



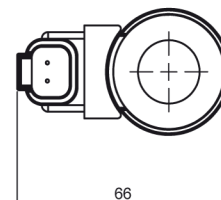
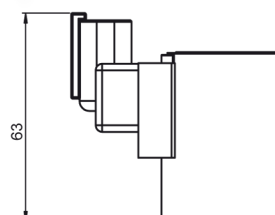
**WITH DIODE
(BI-DIRECTIONAL)**



AMP - JUNIOR



DEUTSCH DT4



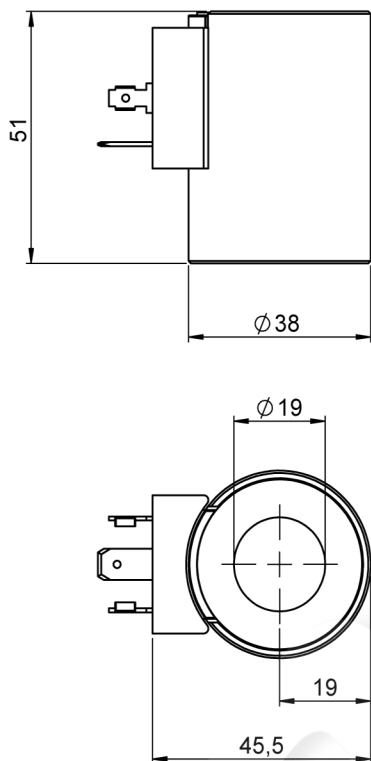
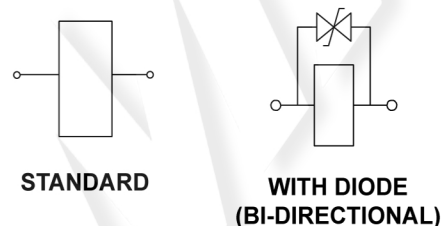
CONNECTOR	PROTECTION CLASS	COIL THERMAL INSULATION CLASS	VOLTAGE [V]	RESISTANCE [Ω]	CIRCUIT	ORDERING CODE
DIN 43650	IP65*	H	12 V dc	3,9	STANDARD	098001190
DIN 43650	IP65*	H	24 V dc	14,5	STANDARD	098002190
DEUTSCH DT 4	IP67	F	12 V dc	3,9	WITH DIODE	098101190
DEUTSCH DT 4	IP67	F	24 V dc	14,5	WITH DIODE	098102190
AMP - JUNIOR	IP65*	F	12 V dc	3,9	WITH DIODE	098201190
AMP - JUNIOR	IP65*	F	24 V dc	14,5	WITH DIODE	098202190

* Protection index with standard connector

COIL - TUBE Ø 19 **24 W**

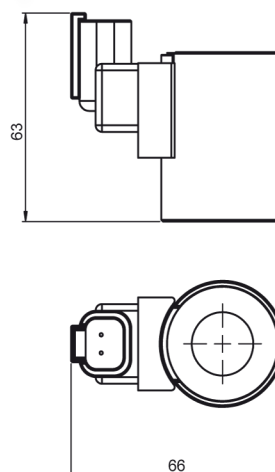
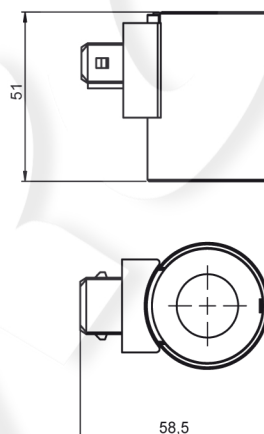
- Wire insulation class. H (>185°C)
- ED. 100%
- Coil power at 20° C. 24 W
- Ambient temperature -20 +40° C
- Weight. 0,28 Kg

ELECTRIC CIRCUITS



AMP - JUNIOR

DEUTSCH DT4



CONNECTOR	PROTECTION CLASS	COIL THERMAL INSULATION CLASS	VOLTAGE [V]	RESISTANCE [Ω]	CIRCUIT	ORDERING CODE
DIN 43650	IP65*	H	12 V dc	6,8	STANDARD	098011190
DIN 43650	IP65*	H	24 V dc	24	STANDARD	098012190
DIN 43650	IP65*	H	26 V dc	27,1	STANDARD	098012191
DIN 43650	IP65*	H	220 V Rac**	1470	STANDARD	098016190
DEUTSCH DT 4	IP67	F	12 V dc	6,8	WITH DIODE	098111190
DEUTSCH DT 4	IP67	F	24 V dc	24	WITH DIODE	098112190
AMP - JUNIOR	IP65*	F	12 V dc	6,8	WITH DIODE	098211190
AMP - JUNIOR	IP65*	F	24 V dc	24	WITH DIODE	098212190

* Protection index with standard connector

** Rectifier not included - Power 25W